

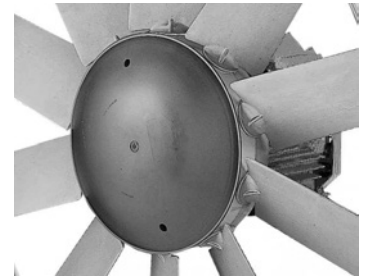


**Leader nella ventilazione
degli essiccatoi per legno**
**Leader in the ventilation
of timber drying kilns**



Lider u ventilaciji sušara za drvo

Leader in the ventilation of timber drying kilns



Garantujemo:

ISKUSTVO: u ovom sektoru smo već petnaest godina.

TEHNOLOGIJA: kontinuirano razvijamo inovativna rešenja.

USLUGA: Nudimo reverzibilne impelere, transportere i motore za svaku situaciju upotrebe.

Kompanija ELEKTROVENT je osnovana 1987. godine, i ubrzo je angažovanje osnivača omogućilo stvaranje linije komponenti koje su je dovele do liderstva u ventilaciji za drvnu industriju. Svest o potrebi za obnavljanjem dovela je nove ljude sa energijom, entuzijazmom i iskustvom, neophodnim za konkurenciju na globalnom tržištu.

ELEKTROVENT je danas proizvodna kompanija specijalizovana za industrijsku ventilaciju i razvila je niz ventilatora za sve primene, sa posebnim iskustvom u sektorima sušenja i klimatizacije. Naš proizvodni program obuhvata:

Prstenasti i kanalski aksijalni ventilatori, sa krilatim profilom radnih kola i visokom efikasnošću, od prečnika 300 do 1250 mm i više.

Ventilatori za visoke temperature, antikorozivne, eksplozivno otporne verzije, krovni ventilatori koji mogu da usisavaju ili ubacuju povećanu količinu vazduha sa smanjenom bukom.

Posebno za sektor drvne industrije, ugradili smo niz komponenti kao što su impeleri, transporteri i motori, proizvedeni od najprikladnijih materijala za različite primene.

We guarantee:

EXPERIENCE: we have been in this sector for fifteen years.

TECHNOLOGY: we continually develop innovative solutions.

SERVICE: we provide reversible impellers, conveyers and motors for every situation of use.

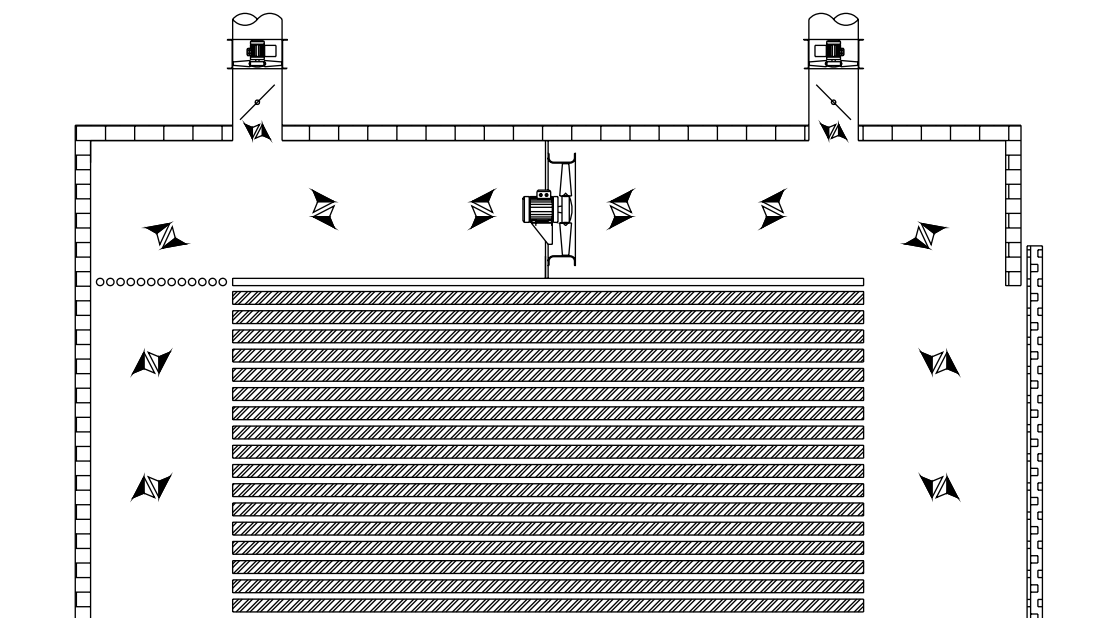
ELEKTROVENT was born in 1987, well soon the engagement of the founders has allowed to create a line of components that have brought it to become leader in the ventilation for the industry of the wood. The awareness of the renewal has brought new people with energies, enthusiasm and experiences, necessary to compete in the global market.

ELEKTROVENT is today a productive reality specialised in the industrial ventilation and it has developed a range of fans for all the applications, with particular experience in the sectors of the drying and the air-conditioning. Our program of production includes:

Ring and ducted axial fans, with wing profile impellers and high efficiency, from diameter 300 to 1250 mm and over.

Fans for high temperatures, anticorrosive, explosion proof versions, roof fans able to extract or to introduce elevated deliveries of air with reduced noisiness.

Particularly for the sector of the wood we have set a series of components as impellers, conveyers and motors manufactured with the most proper materials for the different applications.



Transporteri (kućišta) i elektromotor

Conveyers (casings) and Electric Motor

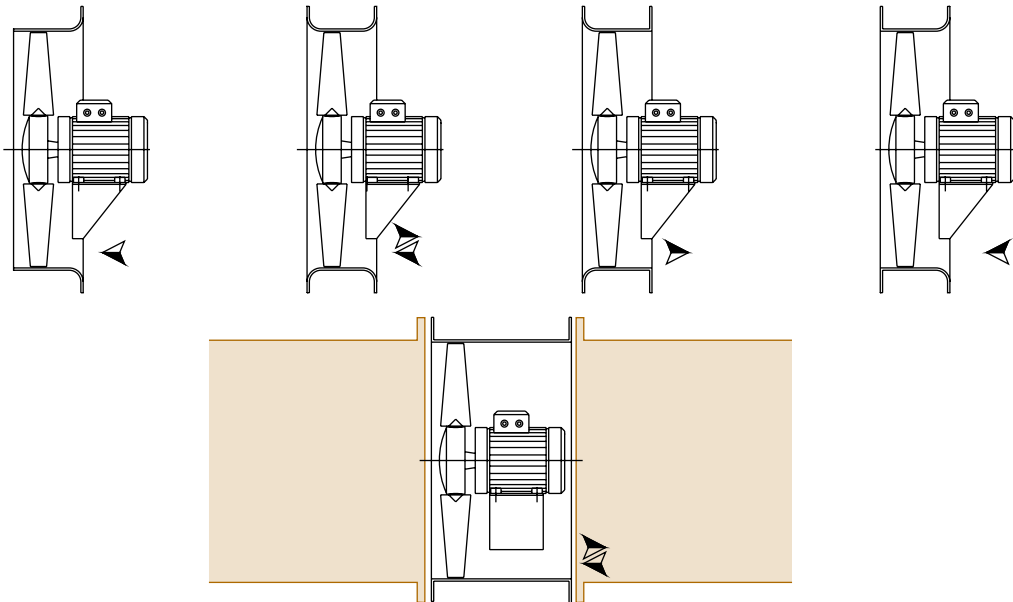
TRANSPORTERI

Upotreba impelera RA u kombinaciji sa našim transporterima sa dvostruko zračnim ulazom garantuje povećanu efikasnost. U stvari, kod izvođenja sa „slobodnim ulazom“, samo ulaz za vazduh sa obilnim zrakom savijanja (ne oštrim uglom) i simetričan sa obe strane omogućava postizanje visokih performansi sa apsorbovanom snagom reduta i najnižim nivoom buke.

Ukoliko je potrebno ugraditi ventilator u kanalizaciju, možemo da isporučimo specifične transportere, različitih prečnika i dužina, sa običnim prirubicama i bušenjem u skladu sa propisima.

Materijali za izgradnju mogu biti:

- Metalni lim Fe ofarban u rerni sa debljom debljinom epoksidnog praha.
- Nerđajući čelik (AISI 304 = DIN 1.4301 = A X5CrNiS 1810 = AFNOR Z7 CN 18-09 = EN 10088/2) druge tipologije, na primer AISI 316 itd., na zahtev.
- Aluminijum u limu (P-AL 99,5% 1050 One 9001/2) druge tipologije, na primer PERALLUMAN 5754 H111s itd., na zahtev.



MOTORI

Elektromotori koji se koriste na ventilatorima za sušenje drveta rade u ekstremnim uslovima: visoke temperature, povišena relativna vlažnost, prisustvo agresivnih isparenja i inverzije rotacije sa posledičnim isprekidanim radom, značajan su primer teškog rada ove važne komponente.

ELEKTROVENT je razvio specifičan asortiman motora za ovu primenu, sa sigurnim prednostima za korisnika koje predstavljaju ušteda energije i povećanje prosečnog veka trajanja motora.

Asortiman predviđa trofazne indukcionne motore sa 4, 6 polova i dvostrukim polaritetom, proizvedene u skladu sa normama IEC, CEI/UNEL i u skladu sa Direktivom o niskom naponu (73/23 EEC), mašinama (MD 89/392 EEC) i elektromagnetnoj kompatibilnosti (EMC 89/336 EEC).

CONVEYERS

The use of the impeller RA combined to our conveyers with double radiated inlet is guarantee of elevated efficiencies. In fact, in execution with "free inlet", only the air inlet with ample ray of bending (not sharp corner) and symmetrical on the two sides consents to get high performances with redoubts absorbed powers and least levels of noisiness.

In the necessity to insert the fan into canalisation, we are able to furnish specific conveyers, in the various diameters and lengths, with plain flanges and drilling unified to the normative of reference.

The materials of construction can be:

- Metal sheet Fe painted in oven with tall thickness of dusts epoxy.
- Stainless steel (AISI 304 = DIN 1.4301 = A X5CrNiS 1810 = AFNOR Z7 CN 18-09 = EN 10088/2) other typologies, for instance AISI 316 etc., on demand.
- Aluminium in plate (P-AL 99,5% 1050 One 9001/2) other typologies, for instance PERALLUMAN 5754 H111s etc., on demand.

MOTORS

The electric motors used on the fans of the timber drying work under extreme conditions: high temperatures, elevated relative humidity, presence of aggressive vapours and inversions of the rotation with consequent intermittent operation, are a significant example of the heavy service of this important component.

ELEKTROVENT has developed a specific range of motors for this application, with sure advantages for the user represented by energetic saving and increasing of the average lifetime of the motor.

The range foresees induction motors three-phase with 4, 6 poles and double polarity, manufactured, according to the norms IEC, CEI/UNEL and conforming to the Directive Low Voltage (73/23 EEC), Machines (MD 89/392 EEC) and Electromagnetic Compatibility (EMC 89/336 EEC).

RA Reverzibilni aksijalni impeler visokih performansi - tip „RA“

Reversible Axial Impeller High-performance - Type "RA"

OPŠTI OPIS

Poseban simetričan profil lopatice "RA" omogućava postizanje reverzibilnosti protoka (ista isporuka vazduha u oba smera rotacije) što se ne može postići kod običnih aksijalnih rotora.

Ova posebnost omogućava njegovu upotrebu u svim primenama, kao na primer u sušarama za drvo, gde je potrebno obrnuti protok vazduha pomoću istog ventilatora.

DOMET:

Mogućnost izbora impelera prečnika od 500 do 1000 sa 2, 4, 5, 8 i 10 lopatica, u različitim uglovima nagiba, 25°, 30°, 35°, 40°, 45°, 50°, gotovo da ograničava broj mogućih konfiguracija.

PREDNOSTI:

Povećana aerodinamička efikasnost može se pripisati savršenom profilu lopatice i optimalnom odnosu broja lopatica i prečnika impelera.

Izuzetna čvrstoća i pouzdanost potvrđene su hiljadama isporuka tokom godina.

Lakoća podešavanja, takođe na licu mesta i bez mogućnosti grešaka, ugla nagiba lopatice zahvaljujući posebnim oznakama u stepenima. Ovaj aspekt omogućava uštedu dragocenih radnih sati, smanjuje troškove i pre svega izbegava neprijatne posledice neuravnoteženog impelera (vibracije, lomovi, anomalne apsorpcije itd.).

TEHNIČKE KARAKTERISTIKE :

- Od 500 do 900 sa 4 i 8 noževa, od 700 do 1000 sa 5 i 10 noževa.
- Sečivo sa simetričnim profilom od aluminijumskog livenog materijala.
- Čvorište „Vice“ od livenog aluminijuma.
- Temperature upotrebe od -80°C do +300°C.
- Podloga (dodatak) od tehnopolimera sa temperaturama upotrebe od -40°C do +110°C.
- Vijci od nerđajućeg čelika.
- Umetnite oznake stepeni.

GENERAL DESCRIPTION

The particular symmetrical profile of the blade "RA" allows getting the reversibility of the flow (same air delivery in both the senses of rotation) non-obtainable effect in the ordinary axial impellers.

This peculiarity allows to use it in all the applications, as for instance in timber drying kilns, where it is necessary to reverse the airflow using the same fan.

RANGE

The possibility to choose impellers with diameter from 500 to 1000 with 2, 4, 5, 8 and 10 blades, in the different angles of inclination, 25°, 30°, 35°, 40°, 45°, 50° almost consents infinite possible configurations.

ADVANTAGES

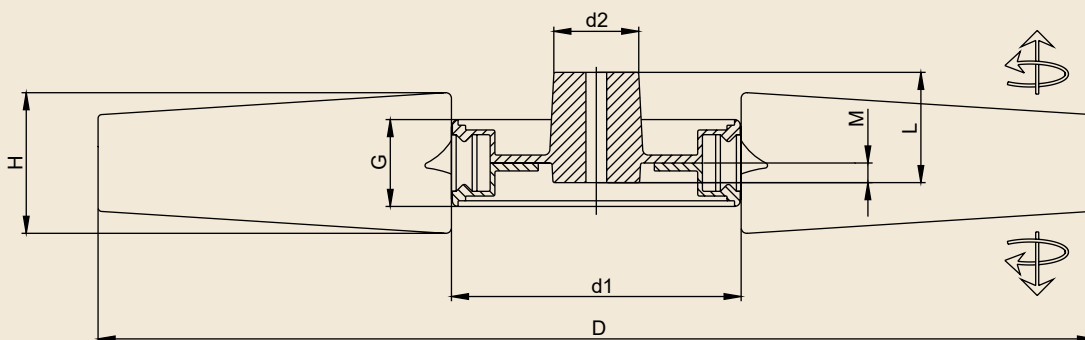
The elevated aerodynamic efficiencies attributable to the perfect profile of the blade and the optimal ratio number of blade-diameter impeller.

The extreme strength and reliability testified by thousand of supplies during the years.

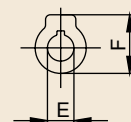
The ease to modify, also on site and without possibility of errors, the pitch angle of the blade thanks to the special insert marks degrees. This aspect permits the saving of precious working hours, it consents to reduce the provisions and above all to avoid the disagreeable consequences of an unbalanced impeller (vibrations, break-ups, anomalous absorptions, etc....)

TECHNICAL CHARACTERISTICS

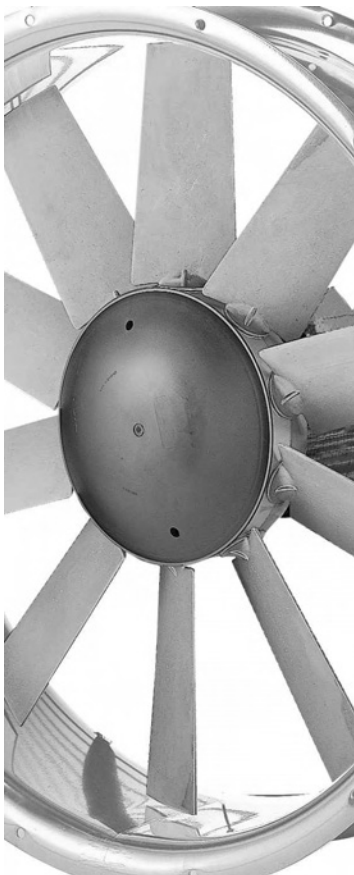
- From 500 to 900 with 4 and 8 blades, from 700 to the 1000 with 5 and 10 blades.
- Blade with symmetrical profile in aluminium casting.
- "Vice" hub in aluminium casting.
- Temperatures of use from -80°C to +300°C.
- Pod (accessory) in techno-polymer with temperatures of use from -40°C to +110°C.
- Screws in stainless steel.
- Insert marks degrees.



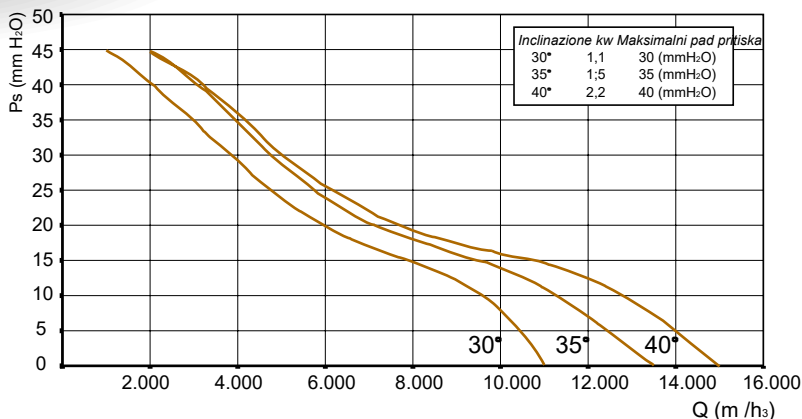
Impeler RA	Ø D	Ø d1	Ø d2	Ø E max (*)	F	G	L	M
4-8	Min 500 Max 900	220	62	38	70	62	100	45
8-8	Min 500 Max 900	220	62	38	70	62	100	45
5-10	Min 700 Max 1000	320	82	42	85	72	115	56
10-10	Min 700 Max 1000	320	82	42	85	72	115	56



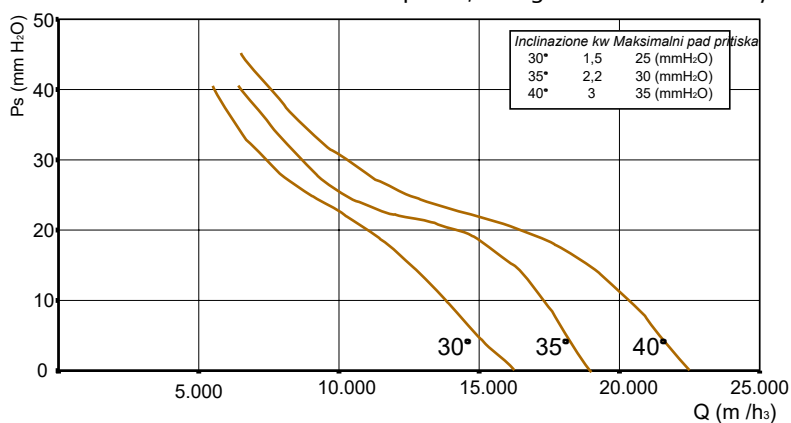
H	20°	25°	30°	35°	40°	45°	45°
	43	57	63	76	78	85	98



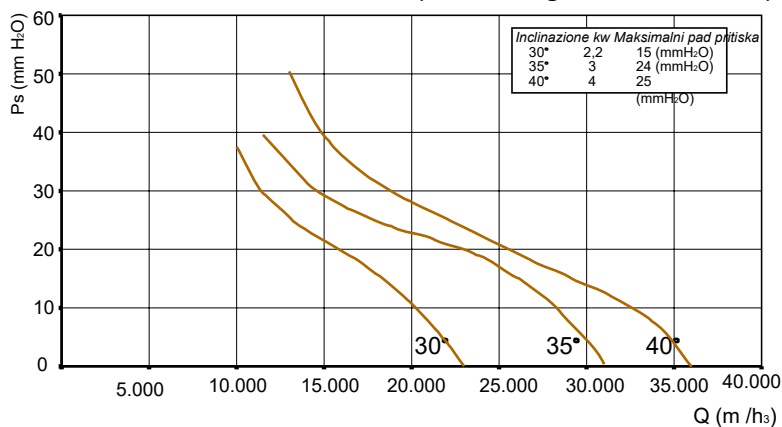
RA 600 - 8 oštrice/blades - 1400 rpm - 1,208 kg/m³ Gustina*/Density



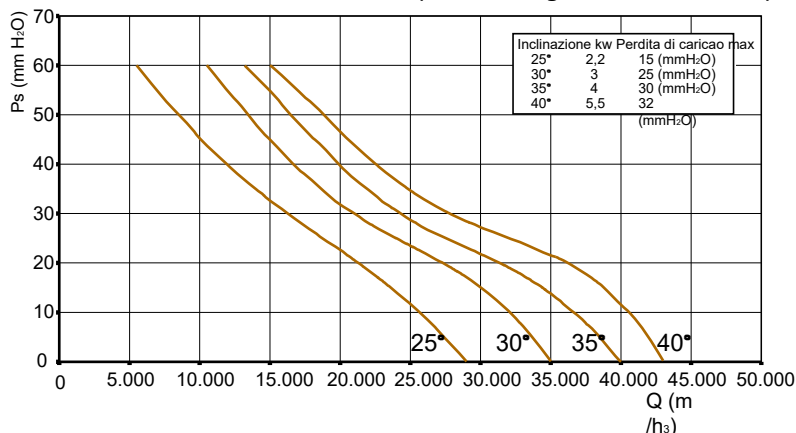
RA 700 - 8 oštrice/blades - 1400 rpm - 1,208 kg/m³ Gustina*/Density



RA 800 - 8 oštrice/blades - 1400 rpm - 1,208 kg/m³ Gustina/Density



RA 900 - 8 oštrice/blades - 1400 rpm - 1,208 kg/m³ Densità/Density



NAPOMENA.. u ovom katalogu je samo izbor performansi dostupnih sa RA impelerom. Na zahtev, moguće je projektovati nekoliko različitih performansi.

NOTE.. in this catalogue, a selection only of the performances optanaible with the RA impeller. Upon request, is able to design several different performances.

Elektrovent



ELEKTROVENT S.r.l.

Via delle Pozzette, 18- 25080 Soiano d/lago (BS) Italy
(Zona Industriale Levrini)

Tel. (++39) 0365 671051

Fax (++39) 0365 671048

www.elektrovent.it

e-mail: info@elektrovent.it