

CH-BOX-HT

DIMENI ODVOZNI VENTILATOR ZA ORMAN DIMA DIREKTNO POKLJUČEN U SKLADU SA EN 12102-3

SMOKE EXHAUST DIRECTLY COUPLED
CABINET FAN ACCORDING TO EN 12102-3

F400



APLIKACIJE

Linija CH-BOX-HT je namenjena postrojenjima koja zahtevaju evakuaciju dima od požara u okruženjima kao što su podzemne garaže, tržni centri, bolnice, škole, pozorišta, industrije. Serija CH-BOX-HT je projektovana i proizvedena u skladu sa evropskom direktivom EN 12101-3, dobijajući sertifikat od strane autonomnog kvalifikovanog instituta za sertifikaciju. CH-BOX-HT su pogodni za prenos čistog vazduha i dima bez prašine do maksimalne temperature od 120°C u kontinuiranom radu ili u slučaju požara na temperaturi od 400°C tokom 120 minuta (F400). Za ugradnju van prostora za požar.

DOMET

11 modela sa prečnikom impelera od 350 do 800 mm i protokom vazduha do 20.000 m³/h. Maksimalni dozvoljeni pritisak: 1.000 Pa.

POSEBNE KARAKTERISTIKE

Asinhroni elektromotor dizajniran za visoke temperature smešten je u odvojenom zaštićenom odeljku u odnosu na impeler: ova karakteristika čini CH-BOX-HT savršenim za usisavanje vazduha visoke temperature u kontinuiranom radu i u vanrednim situacijama. Posebno je cenjen pametan dizajn koji omogućava lak pristup i čišćenje impelera.

KONSTRUKCIJA

- Glavni okvir od aluminijumskog profila, sa dvostrukim oblogama na strani impelera, iznutra obložen samogasivim materijalom debljine 25 mm, jednostavne obloge na strani motora.
- Kružni ulazni deo.
- Impeler sa unazad zakrivljenim lopaticama.
- Asinhroni elektromotor IP55, IEC sertifikovan, izolovan od protoka vazduha za rad na visokim temperaturama i za upotrebu sa invertorom.
- 4 izlazna panela: 1 slobodan za protok vazduha, 1 fiksni i 2 uklonjiva.
- Ortogonalni izlazni protok vazduha u odnosu na ulaz.
- ES. 5 direktno povezano.

TEHNIČKE SPECIFIKACIJE

- Transportovani vazduh: nije abrazivan, nije korozivan.
- Temperatura vazduha: -20°C +120°C u kontinuiranom režimu rada S1, 400°C tokom 120 minuta u režimu gašenja požara S2.
- Napon: trofazne verzije (T) 400V 50HZ.
- Jedna ploča otvorena sa strane izlaza.

PRIBOR

- Zaštitni poklopac od kiše (RC-CB).
- Nosači za fiksiranje (FB-CB) uključeni su uz model 800.
- Servisni prekidač (SW HT).
- Kontraprirubnica (CF-DU).
- Fleksibilna veza (FC-DU HT).
- Zaštitni poklopac od kiše na strani motora (RCM-CB).
- Nožice (SF-CB).

APPLICATIONS

The CH-BOX-HT line are destined for plants requiring the evacuation of fire smokes in environments like underground car parks, shopping malls, hospitals, schools, theatres, industries.

CH-BOX-HT serie is designed and manufactured according to the European directive EN 12101-3 obtaining the certification by an Autonomous Qualified Certification Institute.

CH-BOX-HT are suitable to convey clean air and non dusty smokes up to the maximum temperature of 120°C in continuous service or in case of fire emergency at the temperature of 400°C for 120 minutes (F400). For installation outside the fire compartment.

RANGE

11 models with impeller diameter from 350 to 800mm and airflow up to 20.000 m³/h. Maximum pressure allowed: 1.000Pa.

SPECIAL FEATURES

Asynchronous electric motor designed for high temperature is placed in a separated protected section respect to the impeller: this feature makes the CH-BOX-HT perfect in exhausting high temperature air in continuous service and in emergency situation. Particularly appreciated is the clever design that allows to easily access and clean the impeller.

CONSTRUCTION

- Main frame in aluminium profile, with double skin panels at impeller side, inside lined with 25mm thickness self-extinguishing material, simple skin panels at motor side.
- Circular inlet section.
- Backward curved blades impeller.
- Asynchronous electric motor IP55, IEC certified insulated from airflow for working in high temperature and for inverter use.
- 4 outlet panels: 1 free for the airflow, 1 fixed and 2 removable.
- Orthogonal outlet airflow compared to inlet.
- ES. 5 directly coupled.

TECHNICAL SPECIFICATIONS

- Conveyed air: not abrasive, not corrosive.
- Air temperature: -20°C +120°C in continuous service S1, 400°C for 120 minutes in fire emergency service S2.
- Voltage: three phase versions (T) 400V 50HZ.
- One panel opened from outlet side.

ACCESSORIES

- Rain protection cover (RC-CB).
- Fixing brackets (FB-CB) included with 800 model.
- Service switch (SW HT).
- Counter flange (CF-DU).
- Flexible connection (FC-DU HT).
- Rain protection cover motor side (RCM-CB).
- Support feet (SF-CB).

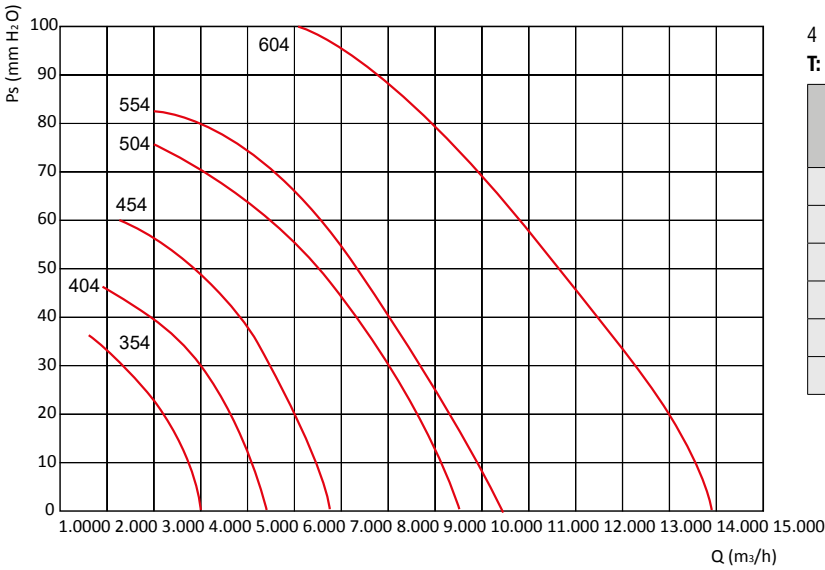
CH-BOX-HT

PERFORMANSE - PERFORMANCES

1 Mm H₂O = 9,8 Pa

Performanse prikazane na dijagramima selekcije odnose se na vazduh na temperaturi od 15°C i nadmorskoj visini od 0 m, a dobijene su kod tipa instalacije „C“ bez rešetke i dodatne opreme.

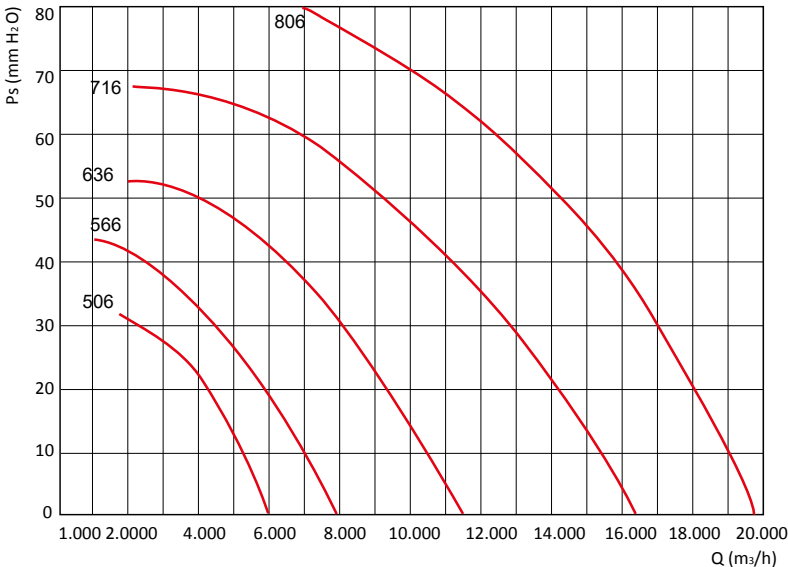
Performances shown in the selection diagrams refer to air at 15°C temperature and 0 m a.s.l. altitude, and they were obtained in installation type "C" with no grid nor accessories.



4 POLA / POLES (1500 RPM)

T: TROFATNO / THREE-PHASE (3Ph-400V-50Hz)

Model Model	Pm (kW)	In max (A)	Mot. (H)	Lp (dB(A))
354 T	0,37	1,1	71	55
404 T	0,37	1,1	71	60
454 T	0,75	2,1	80	66
504 T	1,1	2,9	90	69
554 T	1,5	3,5	90	70
604 T	3	6,5	100	75



6 POLA / POLES (1000 RPM)

T: TROFATNO / THREE-PHASE (3Ph-400V-50Hz)

Model Model	Pm (kW)	In max (A)	Mot. (H)	Lp (dB(A))
506 T	0,55	1,7	80	54
566 T	0,75	2,6	90	55
636 T	1,1	3,8	90	60
716 T	2,2	5,7	112	65
806 T	3	6,8	132	67

Pm = Snaga motora
In = Potrošnja struje
Lp = Nivo zvučnog pritiska u slobodnom polju 3 m od ventilatora sa kanalnim ulazom i slobodnim izlazom

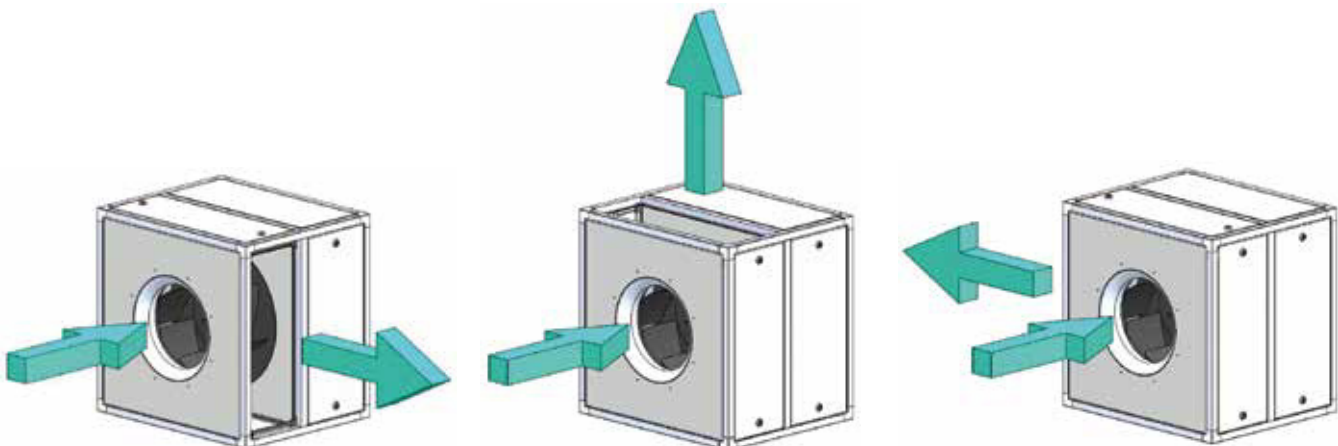
Pm = Motor power. In = Absorbed current.
Lp = Sound pressure level in free field at 3 m distance from the fan, with inlet ducted and free outlet

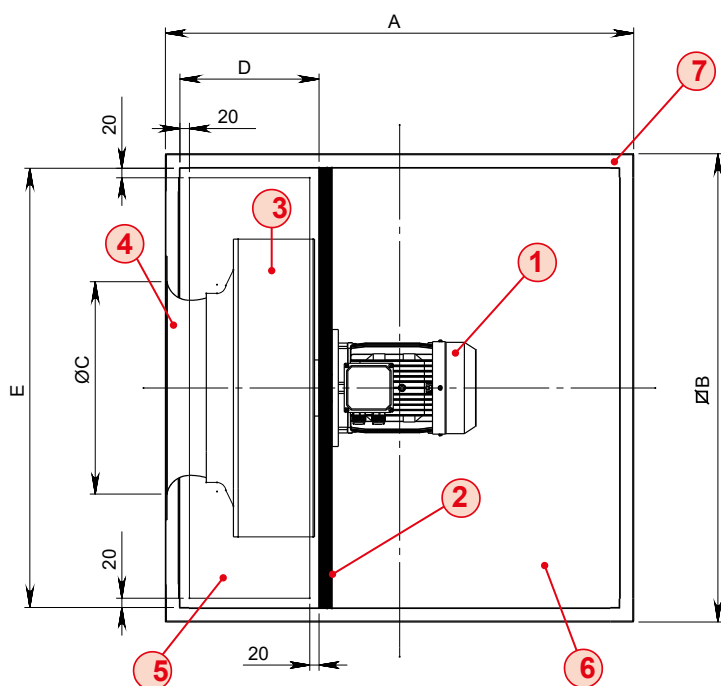
TOLLERANZE: prestazioni aerauliche e rumorosità rientrano nelle tolleranze indicate nella norma DIN 24166, Classe 2.

TOLERANCES: performances and sound power levels within the tolerances allowed by the DIN 24166 standard for Class 2.

CH-BOX-HT

UGLOVI PRAŽNJENJA - INSTALLATION METHOD



CH-BOX-HT**DIMENZIJE - DIMENSIONS**

- **1** Motor - Motor
- **2** Držač motora - motor support
- **3** imper - impeller
- **4** ulazni konus - inlet cone
- **5** Panel za inspekciju impelera - Impeller inspection panel
- **6** Panel za pregled motora - Motor inspection panel
- **7** Okvir - frame

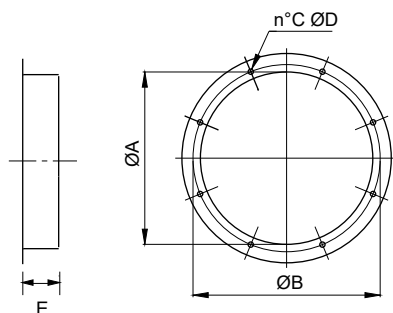
Model Model	A	ØB	ØC	D	E	Kg
350	500	550	300	210	490	40
400	600	700	350	260	640	60
450	600	700	400	270	640	80
500	750	800	450	350	740	100
550	680	800	450	280	740	130
560	750	800	500	380	740	110
600	750	1000	500	320	940	140
630	830	1000	550	420	940	160
710	930	1000	600	490	940	170
800	1030	1100	700	500	1040	200

ØC = INLET

DxE = OUTLET

Dimenzionalne tolerancije u ± 5 mm - Dimensional tolerances ± 5 mm

Dimenzije u mm - Dimensions in mm

CH-BOX-HT**PRIBOR - ACCESSORIES****CF-DU: KONTRIFLANGIJA
CONTRIFLANGIA****CF-DU: KONTRAPRIRUBNICA
COUNTER FLANGE**

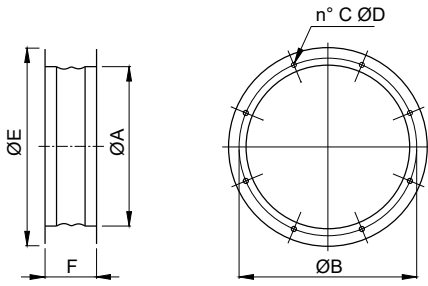
Model Model	CH-BOX-HT	ØA	ØB	C	ØD	E	kg
CF-DU 35	350	360	395	8	10	80	1,2
CF-DU 40	400	410	450	8	12	80	1,9
CF-DU 45	450	460	500	8	12	80	2,1
CF-DU 50	500/550	510	560	12	12	80	2,4
CF-DU 56	560/600	570	620	12	12	80	2,6
CF-DU 63	630	640	690	12	12	80	2,9
CF-DU 71	710	710	770	16	12	80	3,4
CF-DU 80	800	810	860	16	12	80	3,9

CH-BOX-HT**ACCESSORI - ACCESSORIES**

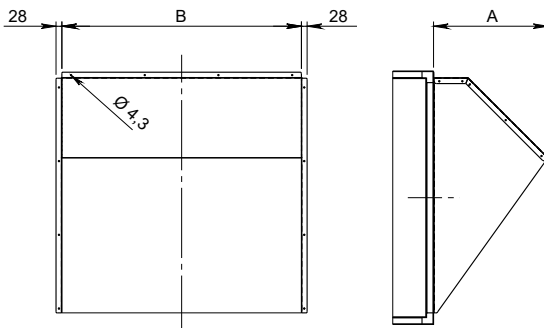
FC-DU-HT: ANTIVIBRACIONI ZGLOB Sprečava širenje vibracija na kanalima.

FC-DU: FLEX CONNECTION

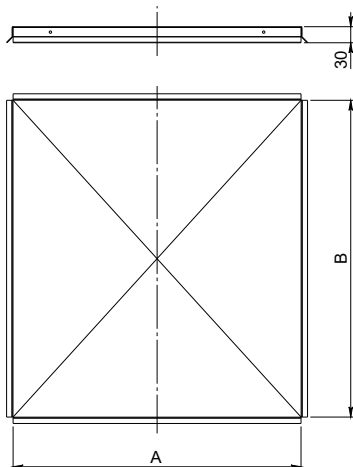
Designed to prevent the propagation of the vibrations along the duct.



Model Model	CH-BOX-HT	A	B	C	D	E	F	kg
FC-DU HT 35	350	360	395	8	10	466	200	2,6
FC-DU HT 40	400	410	450	8	12	496	200	4
FC-DU HT 45	450	460	500	8	12	546	200	4,5
FC-DU HT 50	500/550	510	560	12	12	598	200	5,2
FC-DU HT 56	560/600	570	620	12	12	658	200	5,5
FC-DU HT 63	630	640	690	12	12	730	200	6,2
FC-DU HT 71	710	710	770	16	12	810	200	7,2
FC-DU HT 80	800	810	860	16	12	910	200	8,3

RCM-CB: ZAŠTITNI POKLOPAC OD KIŠE SA STRANE MOTORA**RCM-CB: RAIN PROTECTION COVER MOTOR SIDE**

Modello Model	CHEF-BOX	A	B	kg
RCM-CB 35	350	260	490	5,5
RCM-CB 40	400/450	340	640	7,2
RCM-CB 50	500/550/560	390	740	7,9
RCM-CB 60	600/630/710	460	940	10,0
RCM-CB 80	800	500	1040	10,7

RC-CB: ZAŠTITNA NAVLAKA OD KIŠE**RC-CB: RAIN PROTECTION COVER**

Modello Model	CHEF-BOX	A	B	kg
RC-CB 35	350	500	550	2,2
RC-CB 40	400/450	600	700	3,9
RC-CB 50	500/560	750	800	5,6
RC-CB 55	550	685	800	5,0
RC-CB 60	600	755	1005	6,9
RC-CB 63	630	830	1000	7,5
RC-CB 71	710	930	1000	8,3
RC-CB 80	800	1030	1100	10,0

FB-CB: NOSAČI ZA MIKŠANJE

Nožice omogućavaju fiksiranje ventilatora. Komplet se sastoji od 4 dela pocinkovanog čeličnog lima, koji se fiksiraju na samonoseći okvir KUTIJE. Uključeno uz modele 800.

FB-CB: FIXING BRACKETES The feet allow the fixing of the fan. Kit composed by 4 pieces in galvanized steel sheet, to be fixed to the BOX self-carrying frame. Included with 800 model.

