

SIROCCO

CENTRIFUGALNI VENTILATOR SA PREDNJIM LOPATICAMA FORWARD CURVED BLADE CENTRIFUGAL FAN



APLIKACIJE

Ventilatori serije SIROCCO su namenjeni za instalacije koje zahtevaju visok protok vazduha sa relativno niskim pritiscima, u kanalnim instalacijama. Na primer: ventilacija i klimatizacija civilnih i industrijskih sistema, restorana, parkinga, pomorskih aplikacija itd.

DOMET

Asortiman se sastoji od 10 veličina sa prečnikom radnog kola od 180 do 450 mm.

KARAKTERISTIKE

Asortiman SIROCCO ventilatora odlikuje se ekstremnom robusnošću zbog konstrukcije od obojenog čelika i debljine korišćenih materijala. Još jedna karakteristika je raznovrsnost modela i verzija koje čine asortiman, što vam omogućava da pronađete najprikladnije rešenje za bilo koji problem ventilacije.

KONSTRUKCIJA

- Vijak za obojeni čelični lim.
Prirubnica prema UNI EN ISO 13351 / Tab1.
- Zavareno napred zakrivljeno jednostavno ulazno kolo.
Balansiranje prema UNI ISO 21940-11 standardima.
- Trofazni ili monofazni asinhroni elektromotor, stepen zaštite IP 55, klasa izolacije F, servis S1, oblik B3 ili B5, konstrukcija u skladu sa IEC/EEC (UNEL MEC).
- Izvedbe 4 i 5 (propeler direktno povezan sa vratilom motora).

TEHNIČKE SPECIFIKACIJE

SIROCCO standard:

- Preneti vazduh: čist, malo prašnjav, da ne idete.
- Temperatura transportovanog vazduha: -20°C / $+60^{\circ}\text{C}$.
- Napon:
Trofazna verzija (T) 400V-50Hz.
Monofazna verzija (M) 230V-50Hz.

ARANŽMANI

- SIROCCO izvedba 4: radno kolo direktno spojeno na osovinu motora, motor postavljen na oslonac (stolicu).
- SIROCCO izvedba 5: radno kolo direktno spojeno na osovinu motora, motor sa prirubicom na volutu ventilatora).

PRIBOR

- Prirubnica za usisavanje (ICF-SIR) i pritiskanje (OCF-SIR).
- Usisni (IFC-SIR) i potisni (OFC-SIR) antivibracioni spoj
- Inspeksijski otvor (ID-SIR)
- Antivibracioni nosači (AM)
- Otvor za odvod kondenzata (CD)
- Usisna (IPG-SIR) i ispusna (OPG-SIR) zaštitna mreža (Neophodno za upotrebu sa slobodnim ustima).

NA ZAHTEV

- Atek verzija (SIROCCO ATEKS)
- Verzija od nerđajućeg čelika
- Verzija sa toplim gasom (150°C za direktno spajanje).

APPLICATIONS

The fans of SIROCCO line are designed for installations requiring high air capacities with relatively low pressures, in ducting applications. For instance: ventilation and conditioning of civilian and industrial plants, restaurants, car parks, marine applications, etc.

RANGE

This line consists of 10 sizes with impeller diameter from 180 up to 450 mm.

ADVANTAGES

SIROCCO line is characterized by the extreme sturdiness due to the rigid construction in enamelled sheet metal and the thickness of the materials. Another characteristic is the variety of models and versions composing the series, allowing to find the most suitable solution to any ventilation problem.

CONSTRUCTION

- Volute in epoxy painted enamelled steel sheet. Fixing flanges according to UNI EN ISO 13351/Tab.1.
- Single inlet forward curved blade impeller, welded and balanced according to UNI ISO 21940-11.
- Asynchronous three or single phase, electric motor, protection IP 55, insulation class F, service S1, mounting type B3 or B5, construction according to IEC / EEC (UNEL-MEC) standards.
- Arrangement 4 or 5 (impeller directly coupled to motor shaft).

TECHNICAL SPECIFICATIONS

SIROCCO standard

- Conveyed air: clean or slightly dusty, not abrasive.
- Temperature of conveyed air: -20°C / $+60^{\circ}\text{C}$.
- Voltage: Three phase version (T)
400V-50Hz Mono-phase version (M)
230V-50Hz.

ARRANGEMENTS

- SIROCCO arrangement 4: impeller directly coupled to motor shaft, motor placed on the motor support.
- SIROCCO arrangement 5: impeller directly coupled to motor shaft, motor flanged on the fan volute.

ACCESSORIES

- Inlet (ICF-SIR) and outlet (OCF-SIR) counter flanges.
- Inlet (IFC-SIR) and outlet (OFC-SIR) flexible joints.
- Inspection door (ID-SIR).
- AV mounts (AM).
- Condensation drain hole (CD).
- Inlet (IPG-SIR) and outlet (OPG-SIR) protection grids
(Necessary for use in free air).

ON REQUEST

- Explosion proof versions (SIROCCO ATEX).
- Stainless steel version.
- High temperature version (150°C for direct coupling).

Orijentacija 180° - 225° : zahteva posebnu konstrukciju - Discharge angles 180° - 225° : request special construction

SIROCCO

UGLOVI PRAZNJENJA - DISCHARGE ANGLES

	RD 0	RD 45	RD 90	RD 135	RD 180	RD 225	RD 270	RD 315
RD								
	LG 0	LG 45	LG 90	LG 135	LG 180	LG 225	LG 270	LG 315
LG								

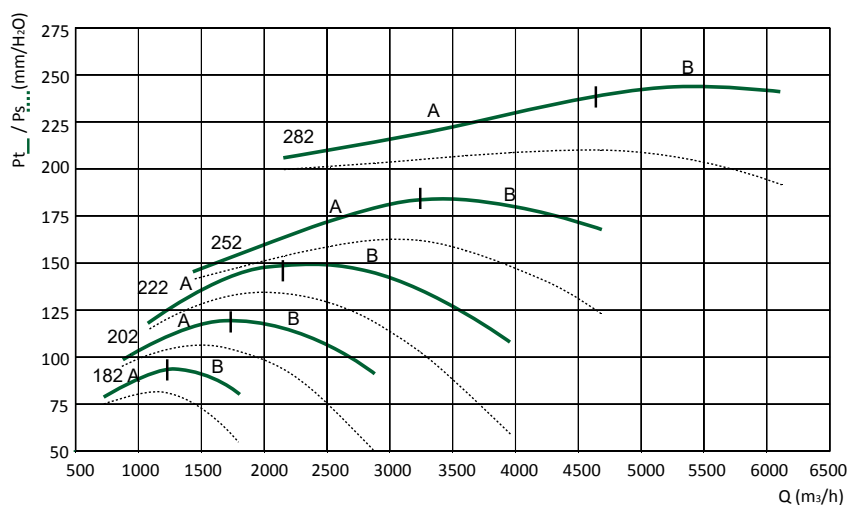
Performanse prikazane na dijagramima odnose se na vazduh na temperaturi od 15°C i nadmorskoj visini od 0 metara, a dobijene su u instalacijama tipa "D" u odsustvu mreže i pribora.

Performances shown in the selection diagrams refer to air at 15°C temperature and 0 mt a.s.l. altitude, and they were obtained in installation type "D" with no grid nor accessories.

2 POLA / POLES (3000 RPM)

T: TROFAZNO / THREE-PHASE (3Ph-400V-50Hz)

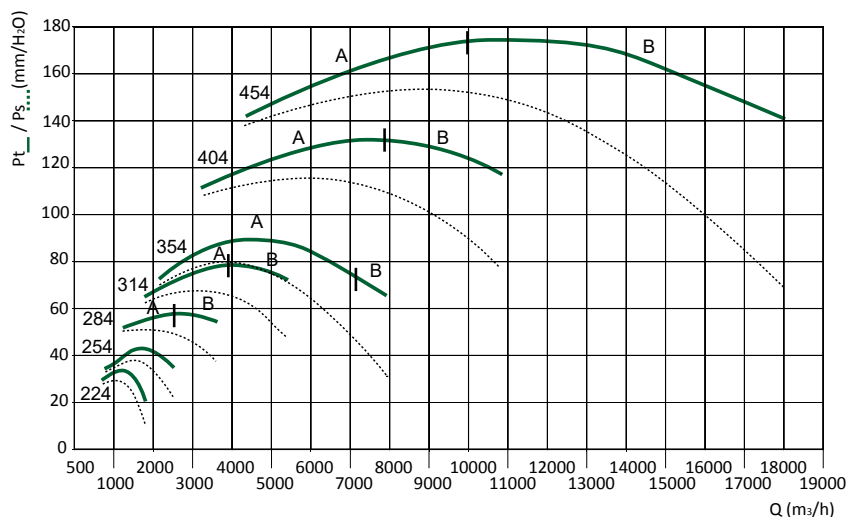
Model Model	Pm (kW)	In max (A)	Mot. (H)	Lp (dB(A))
182/A	0,55	1,35	71	56
182/B	1,1	2,5	80	59
202/A	1,1	2,5	80	64
202/B	2,2	4,7	90	64
222/A	1,5	3,2	90	59
222/B	3	6,1	100	66
252/A	3	6,1	100	65
252/B	4	10,4	112	68
282/A	5,5	10,4	132	68
282/B	7,5	13,8	132	71



4 POLA / POLES (1500 RPM)

T: TROFAZNO / THREE-PHASE (3Ph-400V-50Hz)

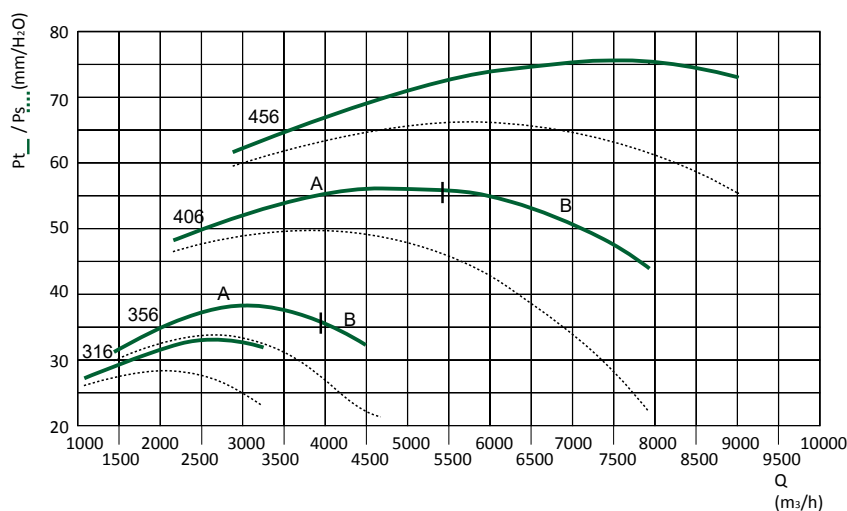
Model Model	Pm (kW)	In max (A)	Mot. (H)	Lp (dB(A))
224/A	0,37	1,1	71	52
254/A	0,55	1,5	80	54
284/A	0,75	1,9	80	55
284/B	1,1	2,6	90	58
314/A	1,5	3,5	90	58
314/B	2,2	4,8	100	61
354/A	3	6,6	100	64
354/B	4	8,3	112	65
404/A	5,5	11	132	66
404/B	7,5	14,6	132	69
454/A	7,5	14,6	132	65
454/B	15	27,7	160	73



6 POLA / POLES (1000 RPM)

T: TROFAZNO / THREE-PHASE (3Ph-400V-50Hz)

Model Model	Pm (kW)	In max (A)	Mot. (H)	Lp (dB(A))
316/A	0,55	1,75	80	52
356/A	0,75	2,1	90	55
356/B	1,1	2,9	90	57
406/A	1,5	3,9	100	57
406/B	2,2	4,8	112	61
456/A	3	6,8	132	61



Tolerancije: aerodinamičke performanse i buka su unutar tolerancija navedenih u DIN 24166, klasa 2.

LpA [dB(A)]: Određivanje nivoa zvučne snage obavljeno je prema UNI EN ISO 3746: 1997 standardu. Merenja nivoa zvučnog pritiska vršena su na površini u obliku paralelepipeda koja zatvara mašinu, na udaljenosti od 2 m od površina same mašine“.

TOLERANCES: performances and sound power levels within the tolerances allowed by the DIN 24166 standard for Class 2.

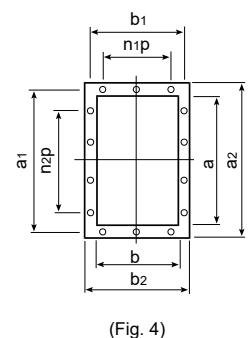
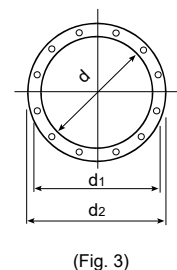
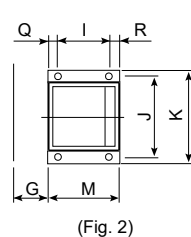
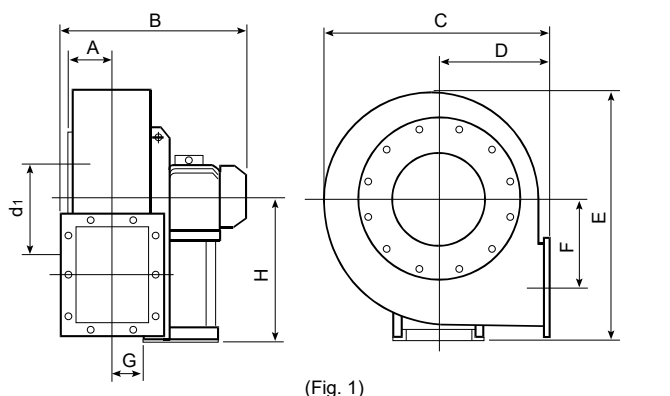
LpA [dB(A)]: Measurement of the sound power level was carried out in compliance with UNI EN ISO 3746:1997. The sound pressure was measured on the surface of a parallelepiped that encloses the machine at a distance of 2 meters from its surface“.

DIMENZIJE / ARANŽMAN 4 - DIMENSIONI / ARRANGEMENT 4

Model Model	Mot. (H)	Pm (kW)	Kg	Ventilator - Fan (fig.1)										Baza - Base (fig.2)						
				A	B	C	D	E	F	G	H			I	J	K	M	Q	R	ø
											0° 135°	180° 135°	270 315							
182/A	71	0,55	19	67	378	325	145	400	108	67	245	145	245	121	203	225	196	49	26	10
182/B	80	1,1	25		402									121	203	225	217	48	48	10
202/A	80	1,1	27	77	419	368	165	442	120	76	265	165	265	121	203	225	217	48	48	10
202/B	90	2,2	33		466									133	234	260	251	58	60	10
222/A	90	1,5	32		485									133	234	260	251	58	60	10
222/B	100	3	41	85	516	410	180	496	135	86	300	180	300	197	289	324	283	34	52	12
224/A	71	0,37	28		414									121	203	225	196	49	26	10
252/A	100	3	51		536									197	289	324	283	34	52	12
252/B	112	4	60	94	557	441	195	527	149	96	315	195	315	197	289	324	276	30	49	12
254/A	80	0,55	33		458									121	203	225	217	48	48	10
282/A	132	5,5	82		621									237	337	372	344	44	63	12
282/B	132	7,5	90	105	621	475	200	605	172	105	375	200	375	237	337	372	344	44	63	12
284/A	80	0,75	40		482									121	203	225	217	48	48	10
284/B	90	1,1	42		529									133	234	260	251	58	60	10
314/A	90	1,5	50		553									133	234	260	246	55	58	10
314/B	100	2,2	58	117	584	527	225	656	196	117	400	225	400	197	289	324	276	30	49	12
316/A	80	0,55	44		506									121	203	225	211	45	45	10
354/A	100	3	66		611									197	289	324	276	30	49	12
354/B	112	4	76	130	632	600	255	739	216	131	450	255	450	197	289	324	276	30	49	12
356/A	90	0,75	56		580									133	234	260	246	55	58	10
356/B	90	1,1	59		580									133	234	260	246	55	58	10
404/A	132	5,5	100		704									237	337	372	336	40	59	12
404/B	132	7,5	118	147	704	655	285	811	245	147	500	285	500	237	337	372	336	40	59	12
406/A	100	1,5	82		643									197	289	324	276	30	49	12
406/B	112	2,2	90		664									197	289	324	276	30	49	12
454/A	132	7,5	112		739									237	337	372	336	40	59	12
454/B	160	15	170	163	844	735	320	914	275	165	560	320	560	337	395	440	436	50	49	14
456/A	132	3	112		739									237	337	372	336	40	59	12

*Težina ventilatora u kg (u kompletu sa motorom) - Weight of fan in kg (complete with motor).

Dimenzionalne tolerancije u ± 5 mm - Dimensional tolerances ± 5 mm



Model Model	Ulazna priрубnica - Inlet flange (fig. 3)					Izlazne priрубnice - Outlet flange (fig. 4)									
	d	d ₁	d ₂	n°	ø	a	b	a ₁	b ₁	a ₂	b ₂	n1xp	n2xp	n°	ø
180	185	219	250	8	8	185	130	219	165	255	201		1x112	6	12
200	205	241	275	8	8	207	148	241	182	277	218	1x112	1x112	8	12
220	228	265	298	8	8	231	166	265	200	301	236	1x112	1x112	8	12
250	255	292	325	8	10	258	185	292	219	328	255	1x112	2x112	10	12
280	285	332	365	8	12	288	205	332	249	368	285	1x125	2x125	10	12
310	320	366	400	8	12	322	229	366	273	402	309	1x125	2x125	10	12
350	360	405	440	8	12	361	256	405	300	441	336	1x125	2x125	10	12
400	405	448	485	8	12	404	288	448	332	484	368	2x125	3x125	14	12
450	455	497	535	8	12	453	322	497	366	533	402	2x125	3x125	14	12